

What is YPSS?

Young People's Support Services is a service for young people offering advice on:

- Planning your future
- Thinking about what you want to do when you leave school
- Thinking about any extra help you might need

We can give information and support with looking at college, work or training. We can help you contact other services that may be able to assist you on areas such as health, finance, transport and housing.

From year 9 onwards your YPSS Careers Adviser will attend the review of your 'Education, Health and Care Plan' (EHCP) and arrange to talk to you about your ideas, interests and future plans.

Main choices after year 11

Further Education

Cambridge Park Sixth Form offer a small and supportive environment with access to entry level qualifications in functional skills (English and Maths) alongside experience in several vocational areas on a rotation including catering, hair and beauty, horticulture and various crafts. Students also develop independent living skills as

well as taking part in ongoing work based learning linked to their vocational courses and take part in formal work experience placements.

Grimsby Institute offer a number of programmes at foundation (entry) level which include Pathways to Employment, Preparation for Adulthood, life skills, functional skills and tasters in various subject areas. They also offer possible progression onto Level 1,2 or 3 programmes.

Franklin College offer a Level 1 programme, which includes functional skills and ICT/Media at Level 1. They also offer programmes at Level 2 and 3 (A Levels etc).

Linkage College is a specialist further education college with a campus in Grimsby offering a range of courses from pre-entry level to Level 2; including functional skills, work related learning and independent living skills.

Traineeships

Traineeships are education and training programmes offered by a small number of local training providers. A traineeship helps to prepare you for your next step, which could include an apprenticeship, a college course or employment and usually provides functional skills (Maths and English) as well as work experience.

Apprenticeships

Apprenticeships involve working and studying at the same time, whilst being paid a wage. Most apprenticeships need some GCSE 4-9 (A-C) grades.

Supported Employment

Care Plus offer help with finding supported work placements including job search and in work support to help remove any barriers to employment.

Supported Internships

This is a type of study programme that helps young people with an Education, Health and Care Plan, aged between 16 and 24, to get a job. It involves having a voluntary placement for a minimum of six months, learning on the job with support from a job coach. It can also include Maths and English functional skills and other appropriate qualifications that will help them move into work. If you are interested in a supported internship contact your EHCP Co-ordinator or email sen@nelincs.gov.uk



Useful Contacts

Cambridge Park Sixth Form: www.cambridgeparkacademy.co.uk

Linkage College www.linkage.org.uk

Grimsby Institute www.grimsby.ac.uk

Franklin College www.franklin.ac.uk

Care Plus supported employment www.careplusgroup.org

Apprenticeships: www.gov.uk/apply-apprenticeship

Traineeships: Please speak to your YPSS Careers Adviser for information on local opportunities.

For general information on careers, visit the National Careers service website:

www.nationalcareers.gov.uk and www.lincs2.co.uk

Local offer – information about services in North East Lincolnshire for people with additional needs: www.nelincs.gov.uk/children-and-families/send-and-local-offer

SENDIASS: Support for parents of young people with SEND: **01472 355365**

Help from Department for Work and Pensions (DWP)

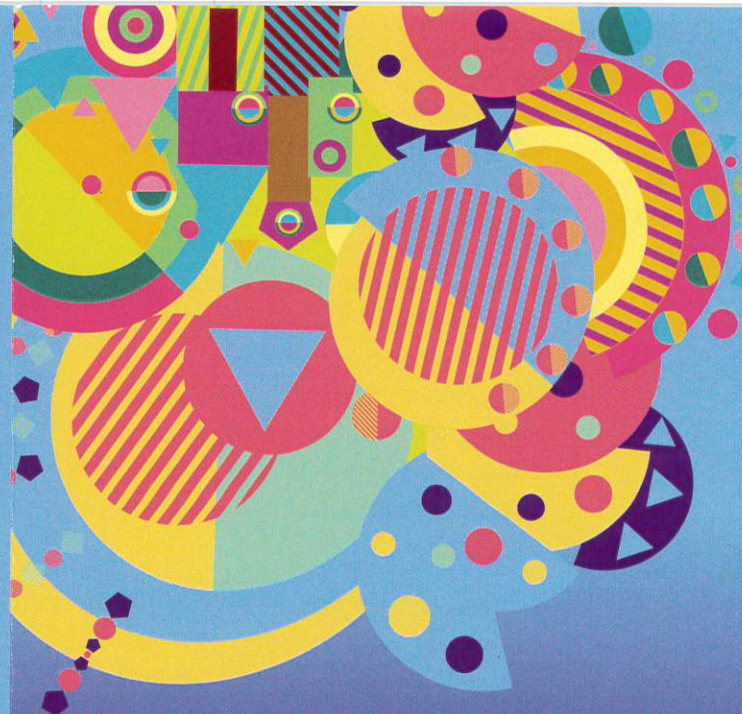
Disability Confident – Grimsby Job Centre **01472 622291**. A number of businesses have signed up to this local scheme that has been developed by disabled people, employers and disability organisations – is designed to support and encourage employers to think differently about disability and to take positive steps to improve how they attract, recruit and retain employees with additional needs.

Access to Work - Get help at work, including an Access to Work grant, if you have a disability or health condition. See www.gov.uk/access-to-work for more details.

Grimsby Learning Centre, Osborne Street, Grimsby, DN31 1EY Tel. 01472 326294 option 1

Please give us some feedback from your careers interview today:

www.nelincs.gov.uk/ypssfeedback



Young People's Support Services (YPSS)

Help with choices

Information for students with additional needs
about post 16 choices



 iCan twitter iCan_NEL

 iCanNEL